

(This tutorial is made by Moda from xbox-scene, this tutorial is free to distribute providing you keep it in original form, if you wish to modify if atleast let me know what for etc... I take no responsibility for any damage caused to any of your consoles through the use of this tut, basically I aint takin no shit from no one, if you're a retard then don't bother doing this mod,... anyway good luck! )

## **XBOX 360 DVD POT CALIBRATION V1.0**

(For Samsung drives – technique is the same for other drives)  
(I have rushed to make this tut, I will release a better one in a couple of days time)

This tutorial is for those of you which have dirty disc errors, discs sometimes working and sometimes not. Etc .. I hope you get the point.

Remember to test your disc on another modded box before you recalibrate the pot to make sure your disc is a good working copy in the first place.

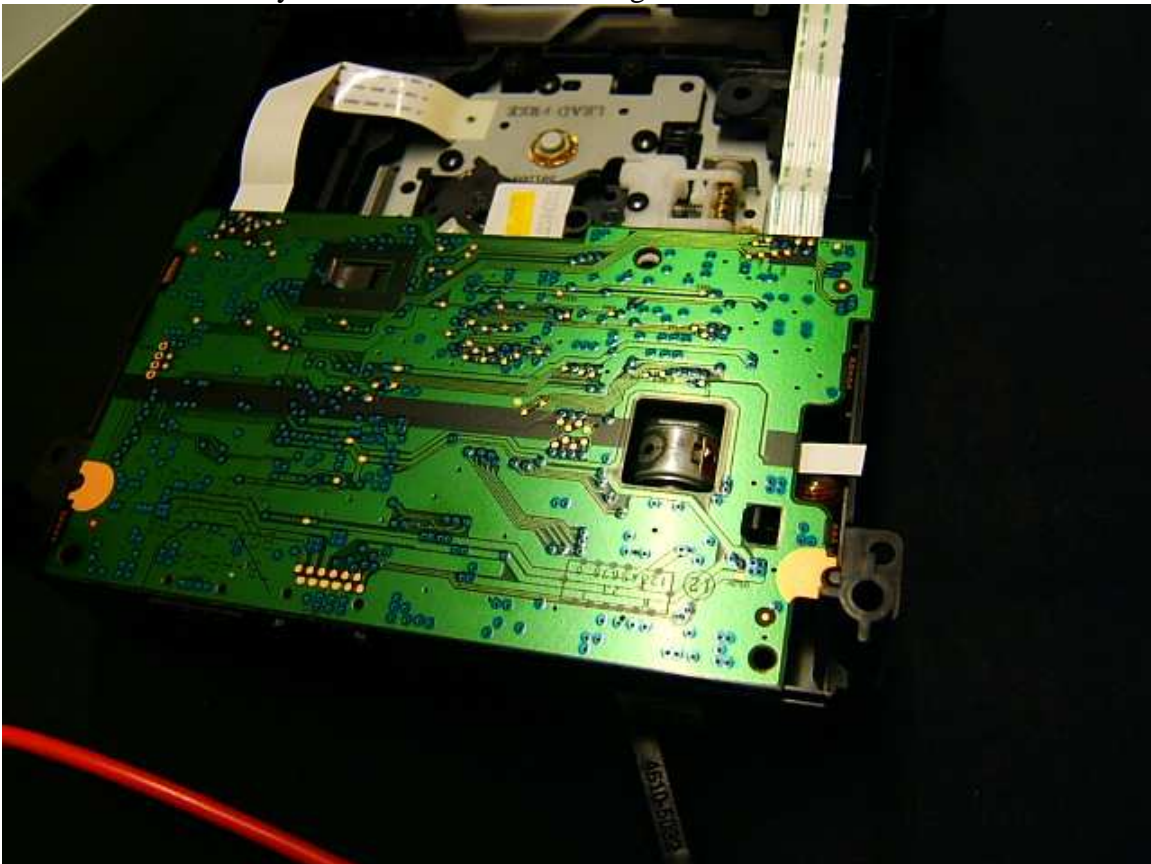
I can recommend using only high quality branded media, Verbatim DVD+R DL seems to be the best so far, after that I would recommend something with Ritek dye. Ive had lots of problems with MCC dye so I wouldn't recommend that for now, but that's me and everyone may have mixed results.

Ok lets start.

Get your Xbox 360 opened up (I'm assuming you know how to do this considering you want to adjust the pot.)

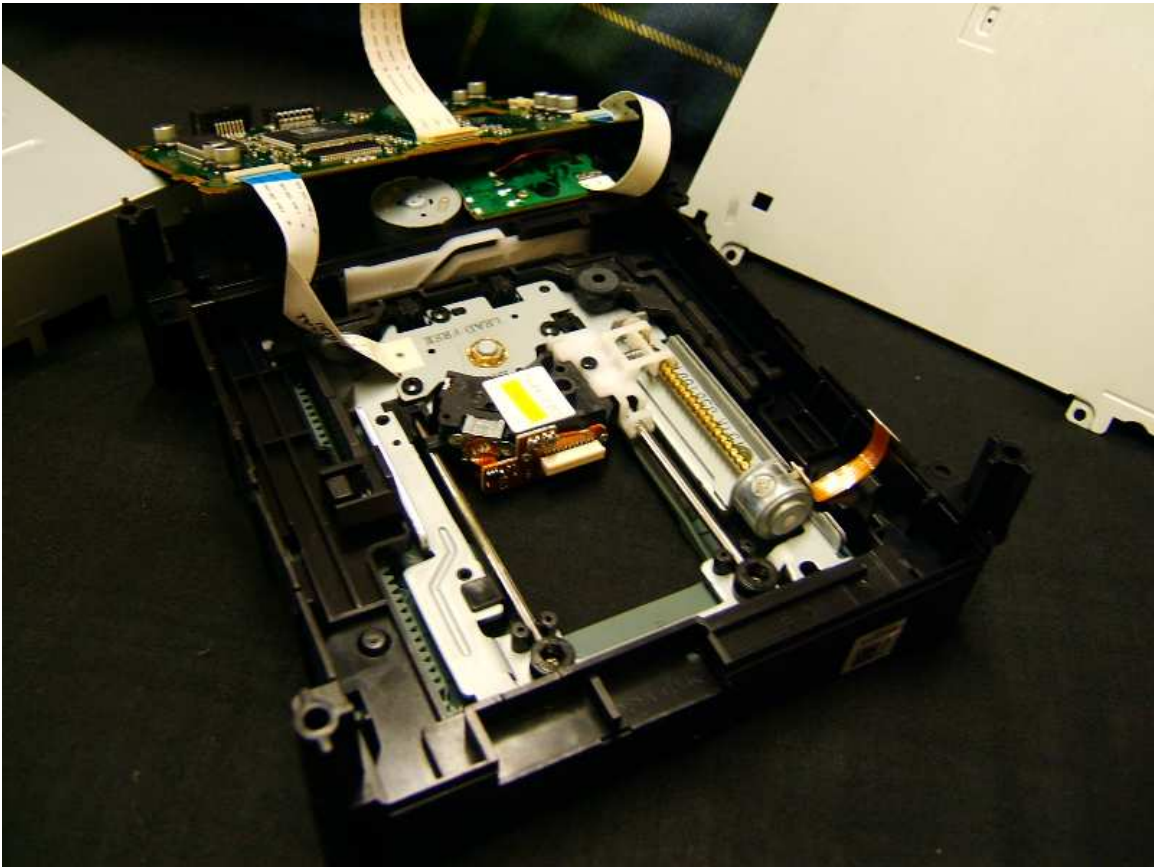
Take the metal casing off the dvd drive by removing the 4 screws holding it in place.

Now turn it over and you should see the following...

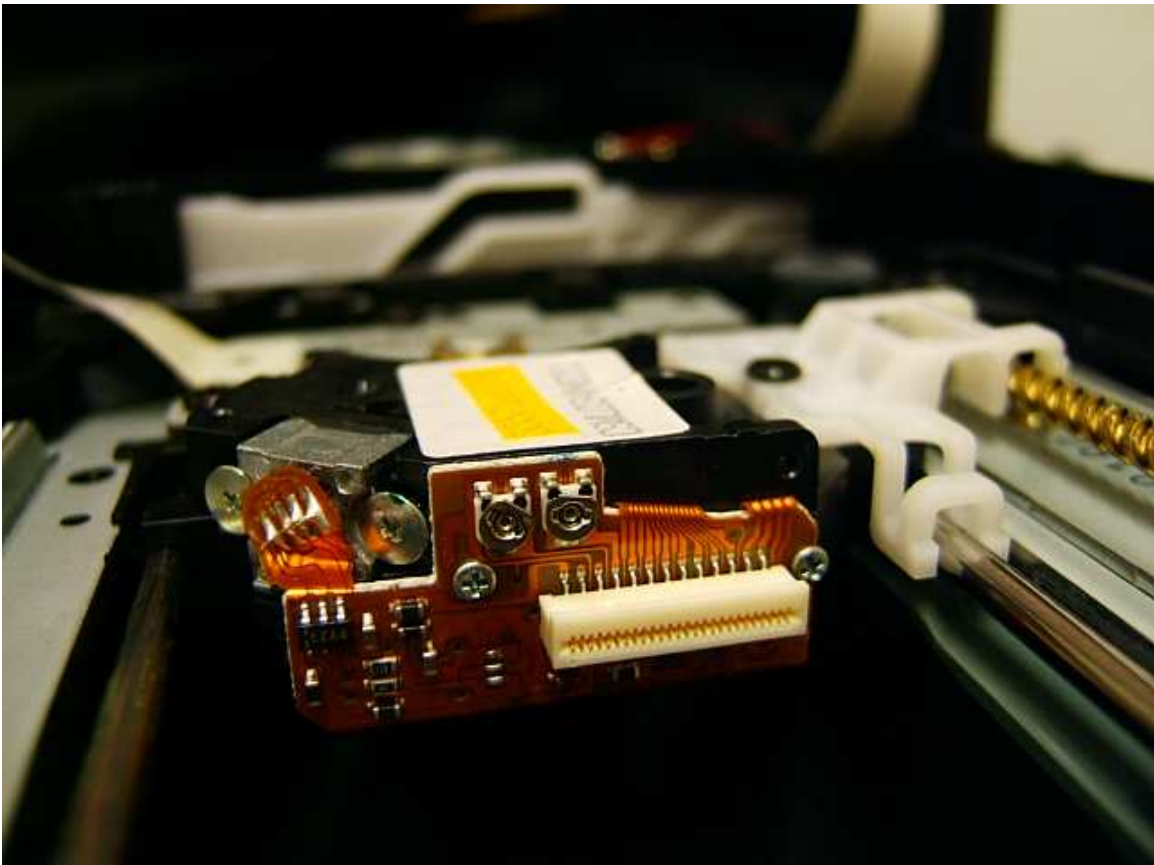


You need to push the black tab on the bottom right to one side, this lets you lift up the pcb. Do this VERY slowly as it will only lift up a little. Once you have lifted it a tiny bit you can remove the cable which is holding the pcb in place. Once you have removed this

you should lift the pcb over and left it there. (remember to be gentle at all times, this cables are hard to come by if you damage them)



Now you should see the picture above. Remove the cable connecting the pcb to the lens so you have more room to calibrate the pot. Now look at the pic below.



To measure the pot, get a multimeter, and also a micro electronic screwdriver with a 2MM tip (flat head).



Now get your multimeter and set it to 20K (ohms). Connect it to the two connections on the pot. (doesn't matter about positive and negative, any way round will do) and take the reading.

The reading for the DVD pot is around 3.4k ohms > 4.2k ohms. Once you have taken this reading, write it down somewhere safe just in case you want to put it back to the original setting.

Now its time to calibrate the pot and reduce the resistance (increase the power of the laser) and hopefully eliminate those dirty disc errors and "open tray" problems.

I would recommend reducing the pot by upto 100 ohms at a time, keep trying until your discs read, **DONT REDUCE THE POT TO LESS THAN 2.8K** as you will risk burning out your laser.

Using your screw driver, rotate the pot clockwise a fraction at a time , remember a FRACTION at a time, and read the pot again, like I said, keep reading the pot with the multimeter and reduce it by 100ohms or so each time until you find a good setting. Ive found that around 3.0k > 3.4k ohms works ok. But feel free to experiment (be sensible)

Now put your console back together and hope for the best. If you would like to see anything added to this tut then feel free to post on the xbox-scene forums. Thanks

**Moda**